



Beaufort County Public Works
Stormwater Infrastructure
Project Summary

Project Summary: Halifax Drive

Activity: Routine/Preventive Maintenance

Duration: 07/19/18-08/14/18

Narrative Description of Project:

Project improved 4,775 L.F. of drainage system. Cleaned out 4,775 L.F. of roadside ditch. Jetted (1) access pipe, (2) crossline pipes and (9) driveway pipes.

2019-502 / Halifax Drive	Labor Hours	Labor Cost	Equipment Cost	Material Cost	Contractor Cost	Indirect Cost	Total Cost
AUDIT / Audit Project	1.5	\$32.69	\$0.00	\$0.00	\$0.00	\$0.00	\$32.69
DPJT / Driveway Pipe - Jetted	24.0	\$546.72	\$459.84	\$67.11	\$0.00	\$354.36	\$1,428.03
HAUL / Hauling	91.5	\$2,110.69	\$1,102.44	\$368.65	\$0.00	\$529.90	\$4,111.68
PL / Project Layout	18.0	\$549.66	\$23.04	\$16.26	\$0.00	\$246.54	\$835.50
STBY / Stand By	10.0	\$228.80	\$191.60	\$22.90	\$0.00	\$148.50	\$591.80
PS / Push up soil	10.0	\$204.60	\$114.06	\$80.13	\$0.00	\$127.20	\$525.99
RSDCL / Roadside Ditch - Cleanout	220.0	\$6,611.30	\$1,309.14	\$275.10	\$0.00	\$2,998.40	\$11,193.94
UTLOC / Utility locates	1.0	\$24.70	\$0.00	\$0.00	\$0.00	\$13.23	\$37.93
2019-502 / Halifax Drive Sub Total	376.0	\$10,309.15	\$3,200.12	\$830.15	\$0.00	\$4,418.13	\$18,757.55
Grand Total	376.0	\$10,309.15	\$3,200.12	\$830.15	\$0.00	\$4,418.13	\$18,757.55

Before

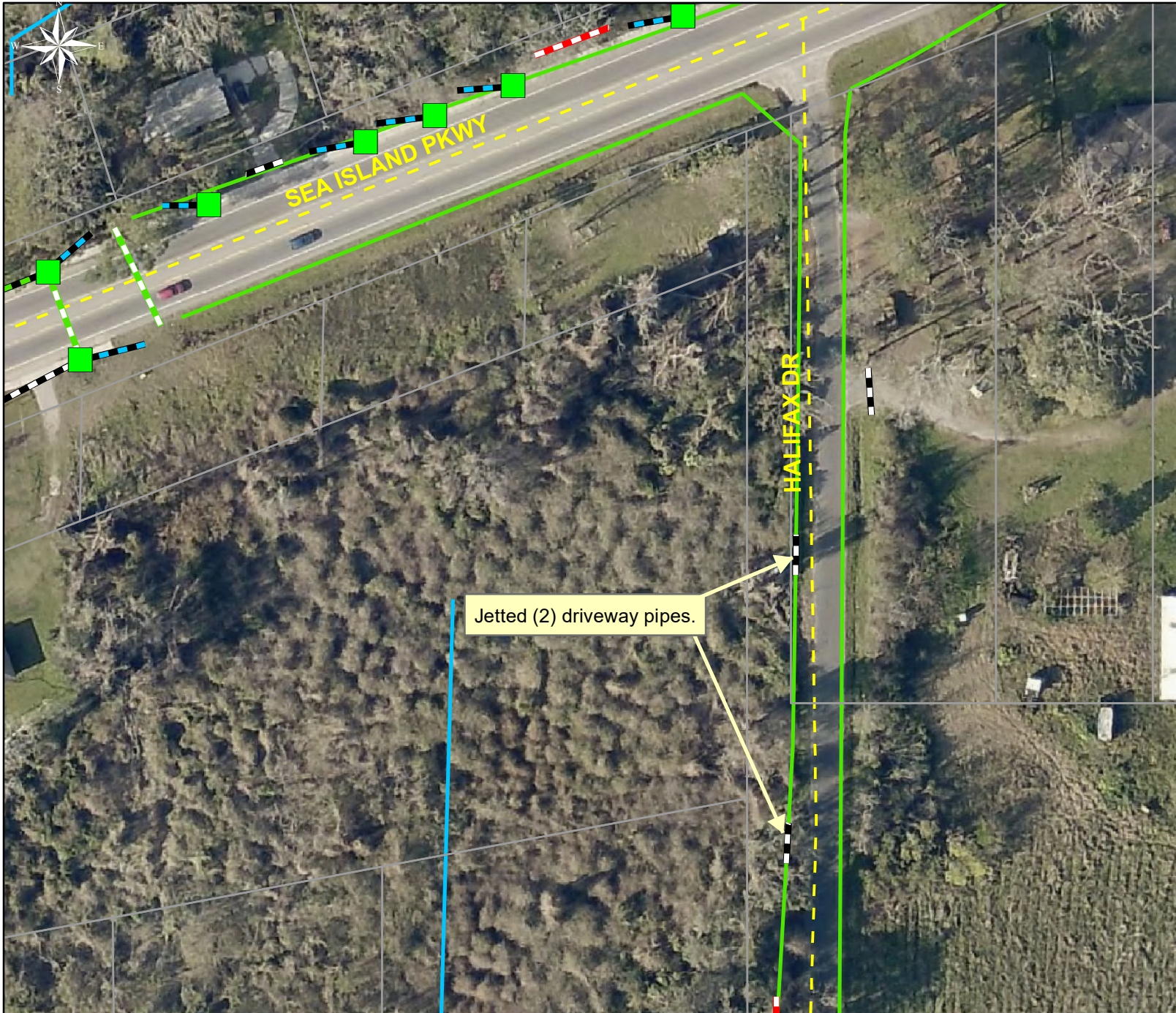


During



After





Project: Halifax Drive Map #1

Activity: Routine/ Preventive Maintenance














Project #: 2019-502

Township/SW Dist: St. Helena Island/8

Completed: August 2018

Legend

Drainage Type

-  Access Pipe
-  Bleeder Pipe
-  Channel Pipe
-  Channel
-  Stream
-  Crossline Pipe
-  Driveway Pipe
-  Lateral
-  Lateral Pipe
-  River
-  Road Pipe
-  Roadside
-  Roadside Pipe

0 20 40 80 120 160 Feet

1 inch = 83 feet

Prepared By: BC Stormwater Management Utility

Date Print: 03/04/19

File: C:\project summaries map\Halifax Road Map #1 2019-502

Project: Halifax Drive Map #2

Activity: Routine/ Preventive Maintenance

Project #: 2019-502

Township/SW Dist: St. Helena Island/8

Completed: August 2018



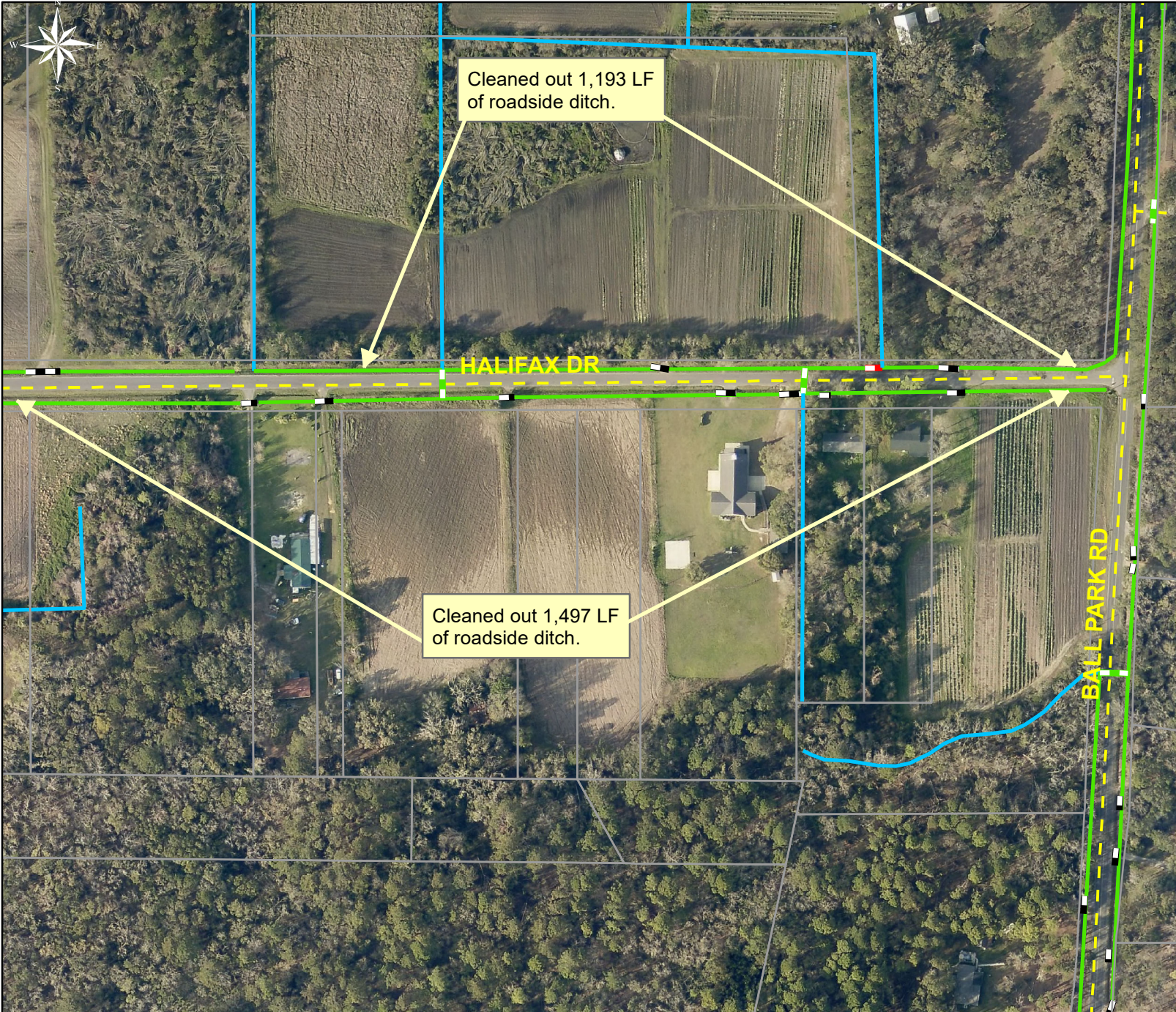
Legend

Drainage Type

- Access Pipe
- Bleeder Pipe
- Channel Pipe
- Channel
- Stream
- Crossline Pipe
- Driveway Pipe
- Lateral
- Lateral Pipe
- River
- Road Pipe
- Roadside
- Roadside Pipe



1 inch = 210 feet



Project: Halifax Drive Map #3

Activity: Routine/ Preventive Maintenance














Project #: 2019-502

Township/SW Dist: St. Helena Island/8

Completed: August 2018

Legend

Drainage Type

-  Access Pipe
-  Bleeder Pipe
-  Channel Pipe
-  Channel
-  Stream
-  Crossline Pipe
-  Driveway Pipe
-  Lateral
-  Lateral Pipe
-  River
-  Road Pipe
-  Roadside
-  Roadside Pipe

0 50 100 200 300 400 Feet

1 inch = 210 feet

Prepared By: BC Stormwater Management Utility

Date Print: 03/04/19

File: C:\project summaries map\Halifax Road Map #3 2019-502

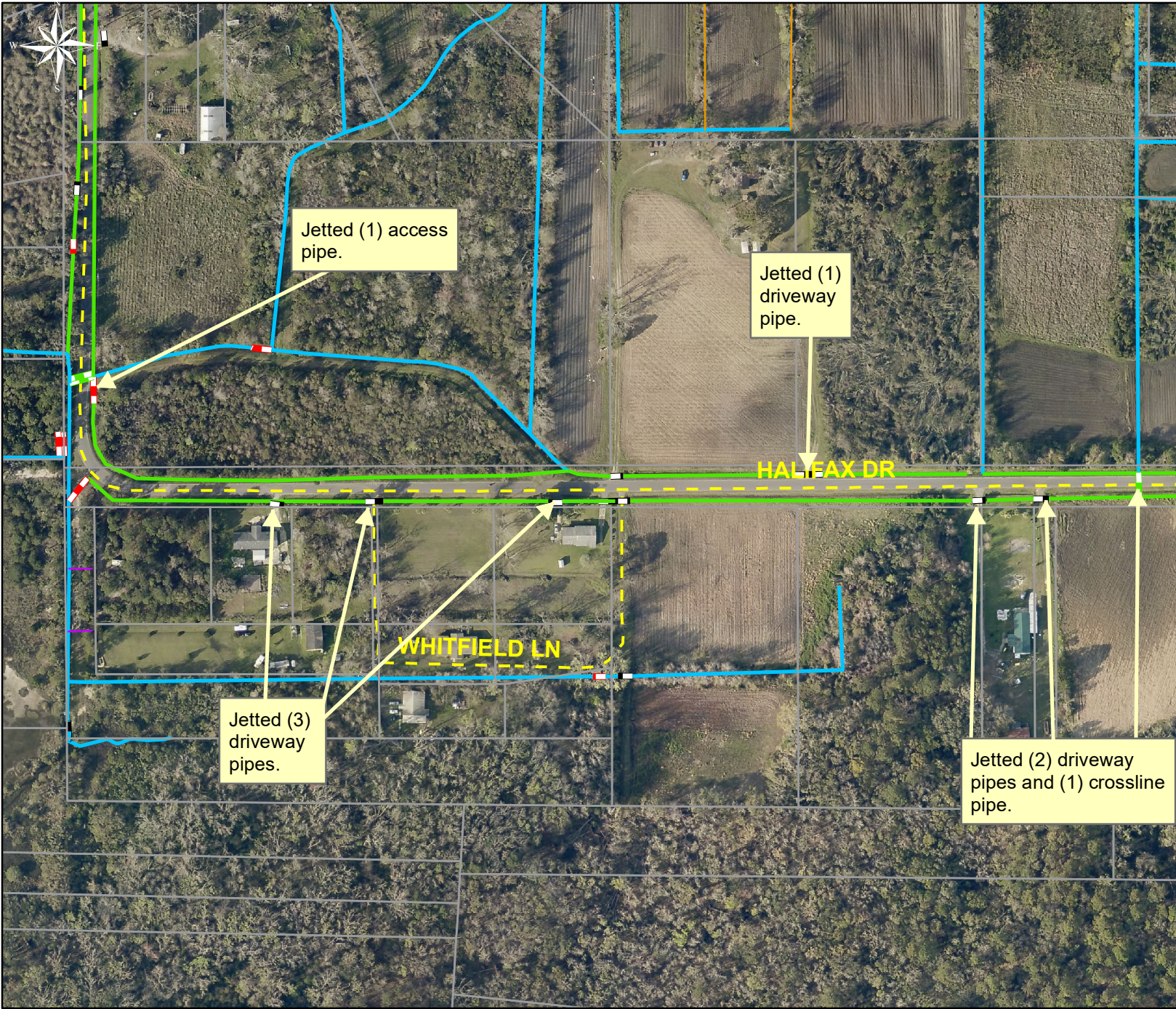
Project: Halifax Drive Map #4

Activity: Routine/ Preventive Maintenance

Project #: 2019-502

Township/SW Dist: St. Helena Island/8

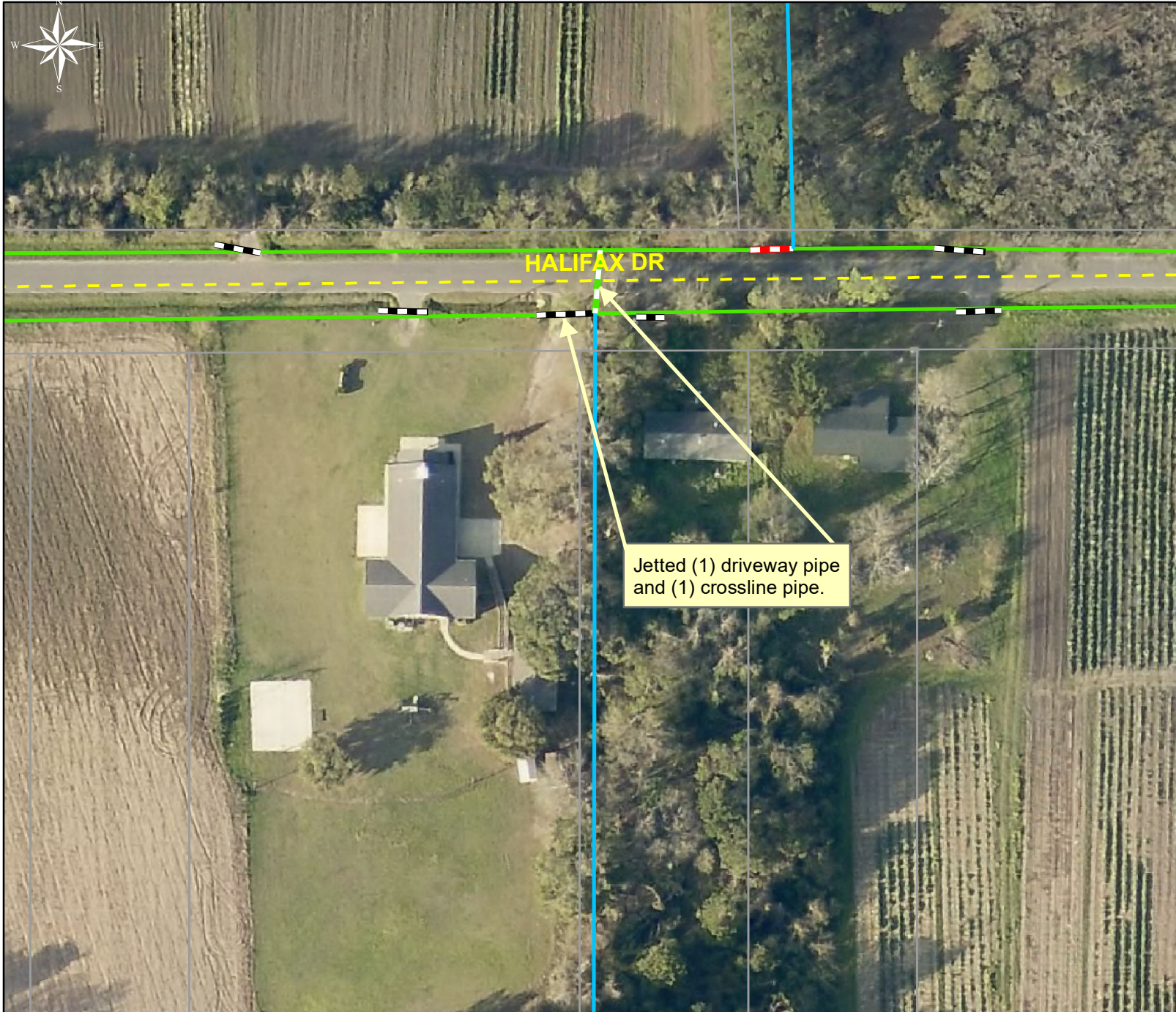
Completed: August 2018



Legend	
Drainage Type	
	Access Pipe
	Bleeder Pipe
	Channel Pipe
	Channel
	Stream
	Crossline Pipe
	Driveway Pipe
	Lateral
	Lateral Pipe
	River
	Road Pipe
	Roadside
	Roadside Pipe



1 inch = 250 feet



Project: Halifax Drive Map #5

Activity: Routine/ Preventive Maintenance














Project #: 2019-502

Township/SW Dist: St. Helena Island/8

Completed: August 2018

Legend

Drainage Type

-  Access Pipe
-  Bleeder Pipe
-  Channel Pipe
-  Channel
-  Stream
-  Crossline Pipe
-  Driveway Pipe
-  Lateral
-  Lateral Pipe
-  River
-  Road Pipe
-  Roadside
-  Roadside Pipe

0 20 40 80 120 160 Feet

1 inch = 83 feet

Prepared By: BC Stormwater Management Utility

Date Print:03/04/19

File:C:\project summaries map/Halifax Road Map #5 2019-502